

Customer :

customer

Customer part :

customer part

Comment :

Comment

S1=0.7

S2=12.29

Tmax=441

Tp S2=480.0

PI=0.05

HI=243

Sample =9107

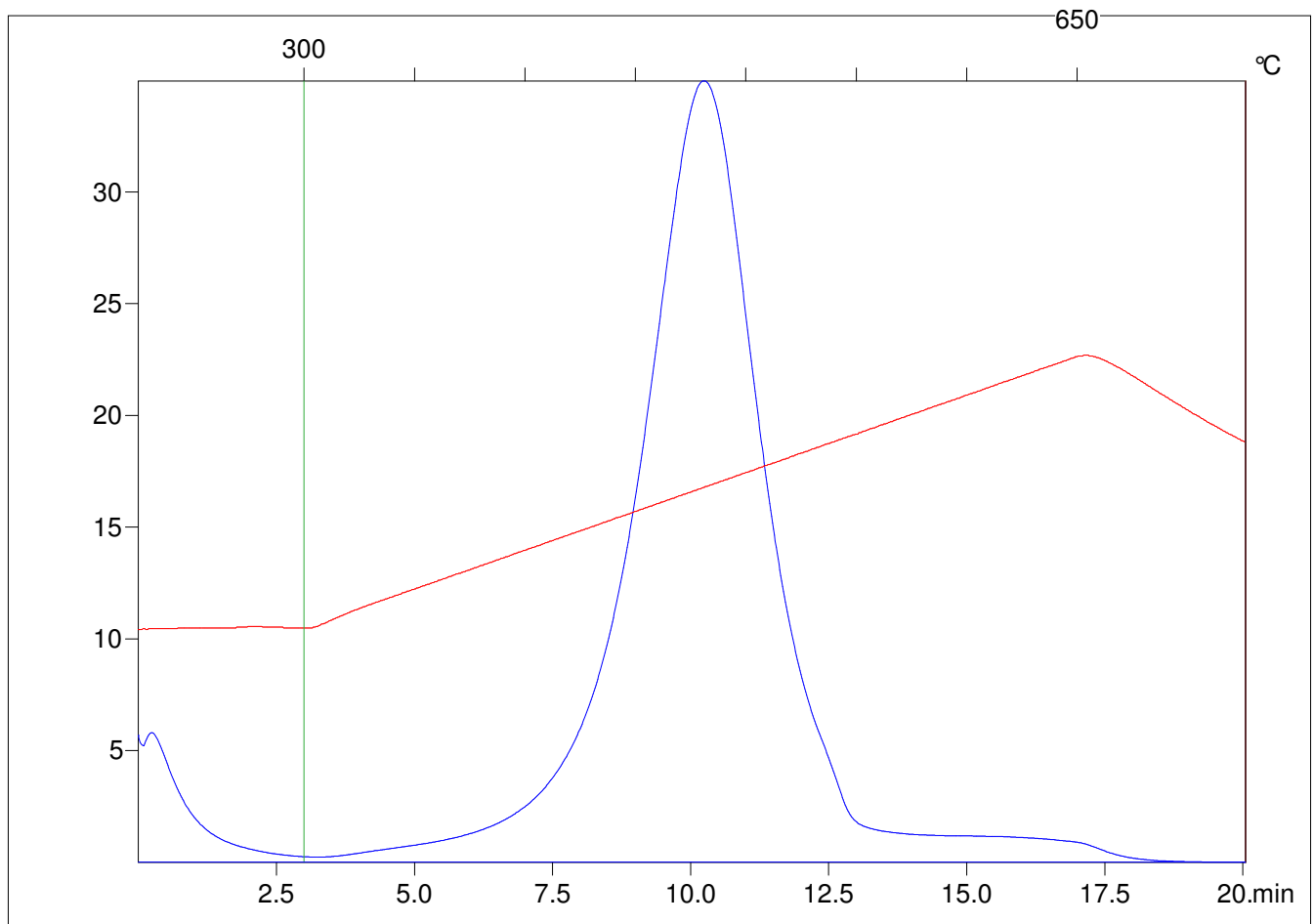
Method =Bulk Rock

Cycle=Basic

KFID(10*9)=1444

Qty =70.9

TOC=5.06



C:\VINC\PK3_1792\PK086.R00 : FID pyrolysis graphic

State

Pyro Status

Oxi Status